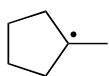


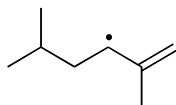
PRACTICE PROBLEMS – UNIT 14 KEY

14A.1

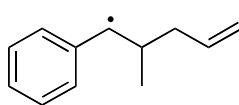
a)



b)

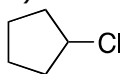


c)

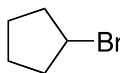


14B.1

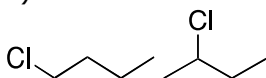
a)



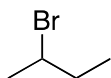
b)



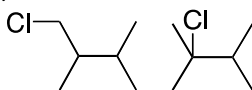
c)



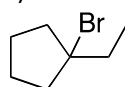
d)



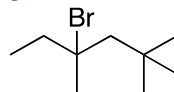
e)



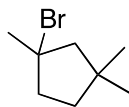
f)



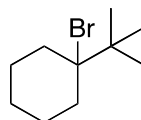
g)



h)

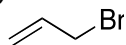


i)

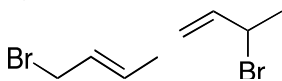


14B.2

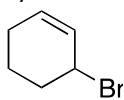
a)



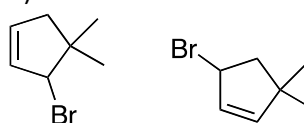
b)



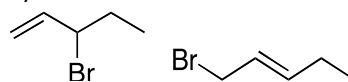
c)



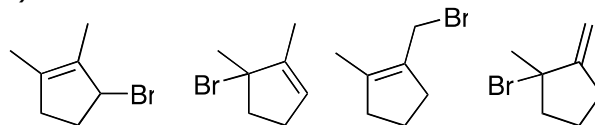
d)



e)



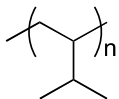
f)



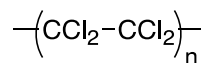
14C. Predict the structure of a polymer given a monomer.

14C.1 Predict the structure of the polymer formed from the following monomers in the presence of ROOR and heat.

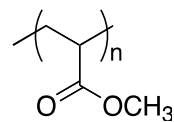
a)



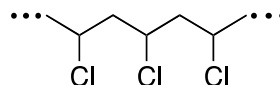
b)



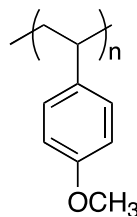
c)



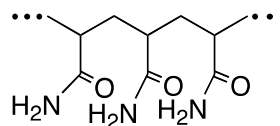
d)



e)

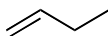


f)

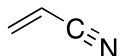


14C.2 What monomer was used to form the following polymers?

a)



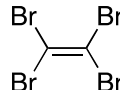
b)



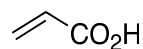
c)



d)



e)



f)

